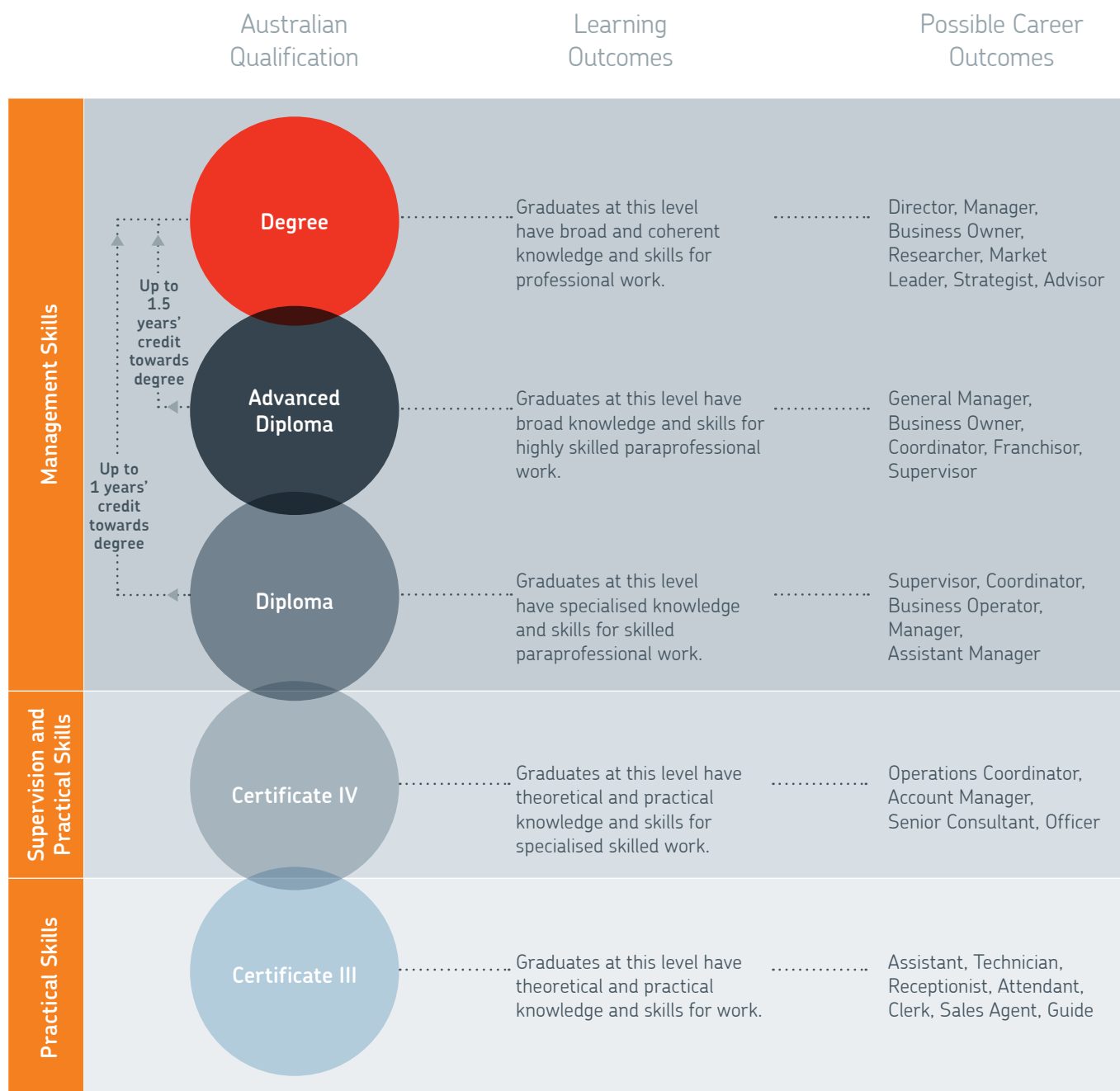


# Qualifications, Pathways and Careers

See the chart below for the multiple ways you can progress through William Angliss Institute into employment or further study.

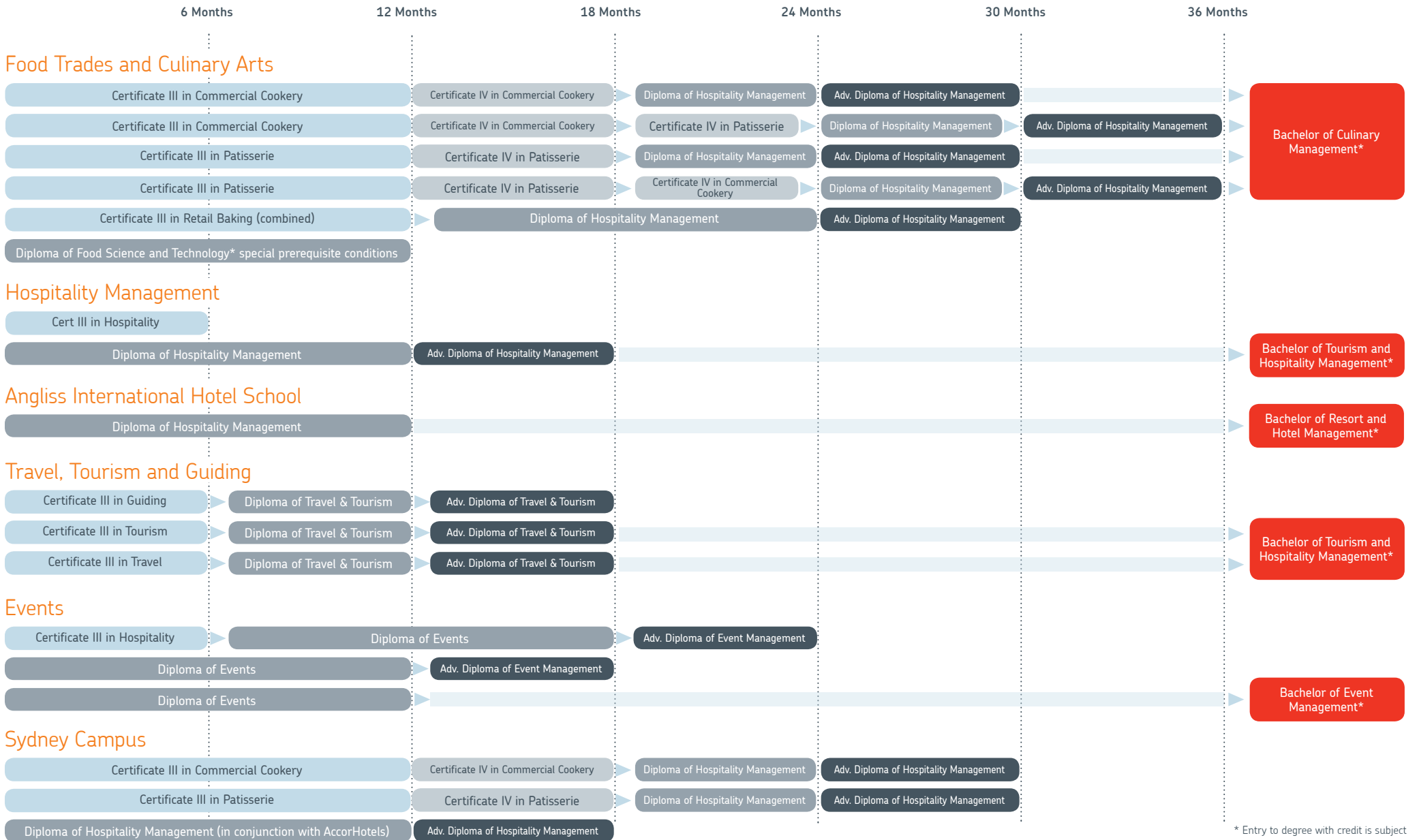


Source: Australian Qualifications Framework 2nd Edition January 2013.

# Pathways

The chart shows the duration of study and progression of each course. The total course duration is subject to satisfactory completion of each course. For example, to enter an Advanced Diploma or Diploma course students may need to complete a Certificate III or Certificate IV qualification.

▶ Indicates packaged courses with an additional qualification (students will receive an offer letter which includes both the lower and higher principal course. A Confirmation of Enrolment will be issued for each qualification)



\* Entry to degree with credit is subject to successful completion of Diploma or Advanced Diploma